

How to apply the Silicon Film

- ① Before applying the film to the device, confirm the film's position and fit on the device.

*In order to make application easier, the size of the film has been made slightly smaller than the device.

*In the event that the outer edges of the device are rounded to create a convex surface (Ex. iPhone 6, Galaxy S6 edge), the film should cover only the flat portion of the back panel (the entire surface of the panel may not be covered).

*Please take care that the film is not upside-down.



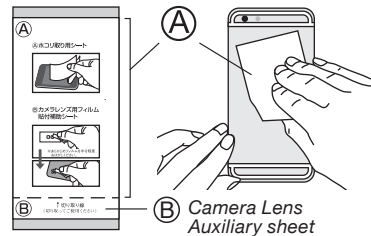
- ② Use a soft cloth, wipe the whole of back panel to remove dirt and dust and clean it.

*Using strong force to wipe the back panel may cause damage.
Please wipe gently and carefully.



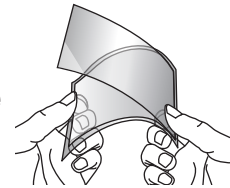
- ③ Use the [A: Dust Removal Sheet] to remove any remaining dust or dirt from the back panel.

*This step is most effective if it is done immediately before attaching the film.



- ④ Peel off the film completely. Please avoid touching the adhesive surface to avoid leaving fingerprints.

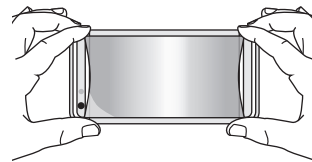
*The four corners are slightly detached to make the film easier to peel off.



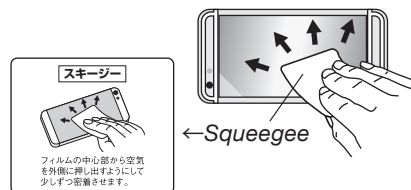
- ⑤ Gently place the film from the center onto the place where you want to affix the back film.

*If the film slips away from your intended location, peel it off and affix it again.

*The adhesive of this film is too strong so rather than peeling it off in one go, remove it gently and slowly off your device.

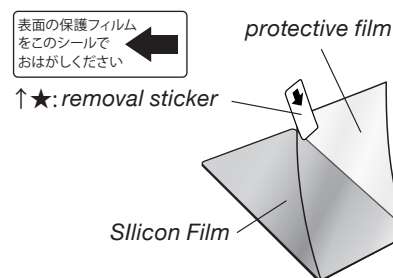


- ⑥ Use the [Squeegee], Affix the film working outward from the center so as to push away any air bubbles that are trapped between the film and the back of your device.



- ⑦ To prevent scratches on our film (the Silicon Film), there is the protective film attached to its surface. Please peel off the protective film using [★: removal sticker] as a final step.

*Please do not forget to peel this film off.



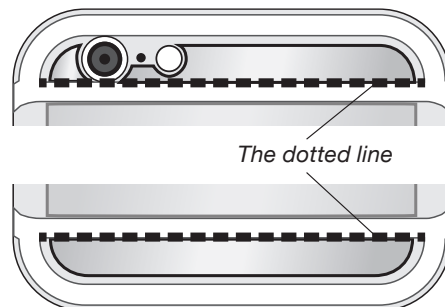
Continued on next page

- ⑧ The job is completed.
In the case of iPhone back film, proceed to Step ⑨.

*The adhesive surface of the silicon film features a special coating that prevents the formation of air bubbles.
Although a noticeable grid pattern may remain, it should then gradually disappear and become almost invisible after 4 to 5 days.

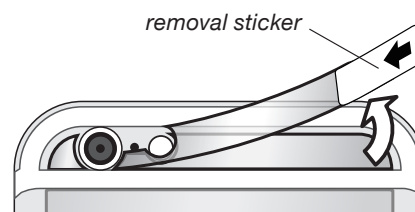
- ⑨ Attach the remaining films to the top and bottom portion respectively.

Especially for the iPhone 6 (Plus), adjust the film edge to the dotted line and repeat Step ⑥.



- ⑩ Please use [removal sticker] to peel off the protective film.

*Please do not forget to peel the protective film off as a final step.



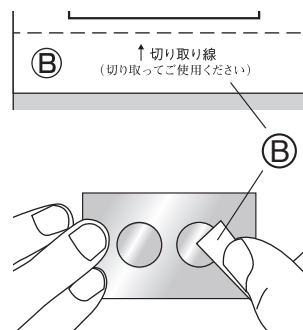
How to apply the Camera Lens Film

- ① Use a soft cloth and gently clean the camera lens.

- ② Peel off one transparent film for camera lens from the backing film and leave the film half peeled off.

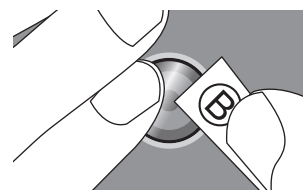
Apply the [Ⓑ]: *Camera Lens Auxiliary sheet*] to about half of the film for camera lens, and peel it off the backing film.

*Please note: If you put the auxiliary sheet on the film entirely not partially, it may become difficult to apply.



- ③ Place the film on the camera lens, which has now been detached from the backing film.

Once you have decided on its position, use one finger to place the film on the camera lens, apply it firmly to the camera lens and then you are ready to go.



Please check our website explaining how to apply the silicon film with pictures.

You can also download pdf files of the manual.

http://www.asdec.co.jp/product/how_si_eng.html ↓

