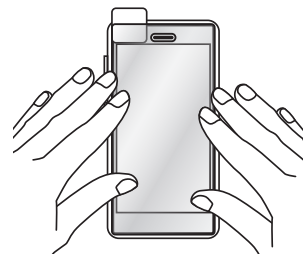


# How to apply the Glass panel Screen Protector

- ① Before applying the the Glass panel, check the place where it will be attached.

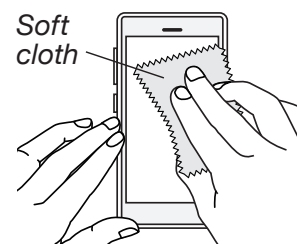
\*In the event that the outer edges of the screen panel are rounded to create a convex surface (Ex. iPhone 6, Galaxy S6 edge), the Glass panel should cover only the flat portion of the screen (the entire surface of the panel may not be covered).



\*Please take care not to install the Glass panel upside down.

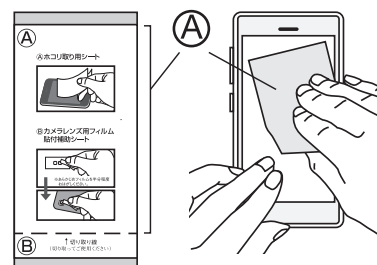
- ② Use a soft cloth, wipe the whole of LCD screen to remove dirt and dust and clean it.

\*Using strong force to wipe the LCD screen may cause damage. Please wipe gently and carefully.



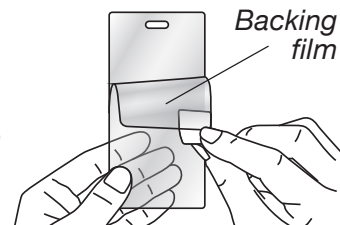
- ③ Use the attached [A: Dust Removal Sheet] to remove any remaining dust or particles from the LCD screen surface.

\*This step is most effective if it is done immediately before attaching Glass panel.

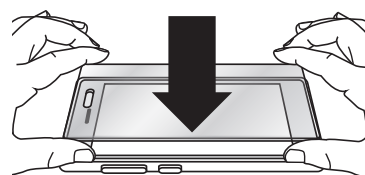


- ④ Peel off the backing film of the Glass panel completely.

\*Please be careful to avoid touching the adhesive surface as much as possible.



- ⑤ Re-confirm the position of the LCD screen and then align the Glass panel. Attach the Glass panel slowly, taking care not to let air or dirt get inside.



- ⑥ Attach Glass panel naturally, spreading it from the middle towards the outer edges.

\*A mottled pattern may remain on the adhesive layer immediately after it is attached, but this will naturally disappear within one to two days.



Please check our website explaining how to apply the Glass panel screen protector with pictures.

You can also download pdf files of the manual.

[http://www.asdec.co.jp/product/how\\_gp\\_eng.html](http://www.asdec.co.jp/product/how_gp_eng.html) ⇒

**ASDEC** ASDEC Co., Ltd.

E-mail : amazon.com@mobilefilm.jp



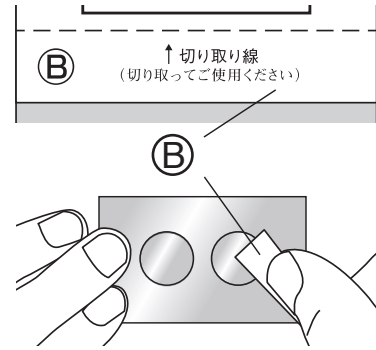
## How to apply the Camera Lens Film

① Use a soft cloth and gently clean the camera lens.

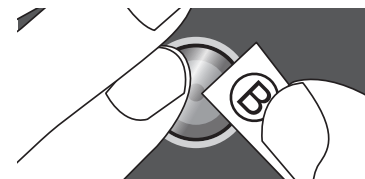
② Peel off one transparent film for camera lens from the backing film and leave the film half peeled off.

Apply the [(B): *Camera Lens Auxiliary sheet*] to about half of the film for camera lens, and peel it off the backing film.

\*Please note: If you put the auxiliary sheet on the film entirely not partially, it may become difficult to apply.



③ Place the film on the camera lens, which has now been detached from the backing film. Once you have decided on its position, use one finger to place the film on the camera lens, apply it firmly to the camera lens and then you are ready to go.



## What to do in the following cases

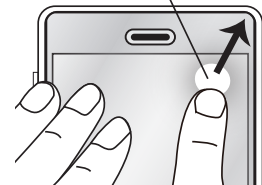
### If air bubbles are formed:

○ Bigger bubbles can be removed by pushing the Glass panel outward with your finger.

\*Fine dust and small bubbles will be absorbed into the adhesive surface and will disappear.

○ If large pieces of dust or other material are caught under the Glass panel, and the bubbles won't disappear, temporarily lift the Glass panel. And then, use adhesive tape to pick up and remove the particles from its adhesive surface.

Air bubbles



A dust

Adhesive tape

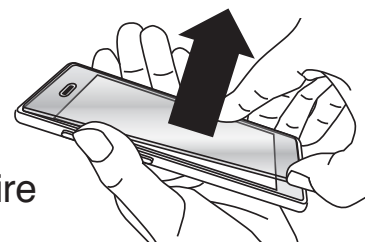


### How to peel off the Glass panel:

① Use a fingernail to pick up a corner of the Glass panel, so it floats upward.

② Lift it up slowly, so that air spreads under the entire Glass panel, then peel it away from the LCD screen.

\*Lift it up carefully. Lifting it forcefully may damage the Glass panel.



### If the Glass panel is not affixed in the right place:

① Peel off the Glass panel carefully as the above instruction.

② Hold the product's edges and reattach it.